

Oral Report to the Alaska Board of Fisheries 2023

Review of Salmon Escapement Goals in the Alaska Peninsula/ Aleutian Islands and Chignik Management Areas



by
Kevin Schaberg
Timothy McKinley
And
Heather Finkle

February 2023

Presentation Objectives

- Identify policies
- Identify escapement goals and review methods
- Present findings



Policy and Escapement Goal Definition

This review was based on


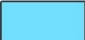
- Policy for the Management of Sustainable Salmon Fisheries (SSFP; 5 AAC 39.222)
- Policy for Statewide Salmon Escapement Goals (EGP; 5 AAC 39.223)
- Important terms defined in the SSFP are
 - biological escapement goal (BEG)
 - sustainable escapement goal (SEG)
 - lower-bound SEG (LB SEG)

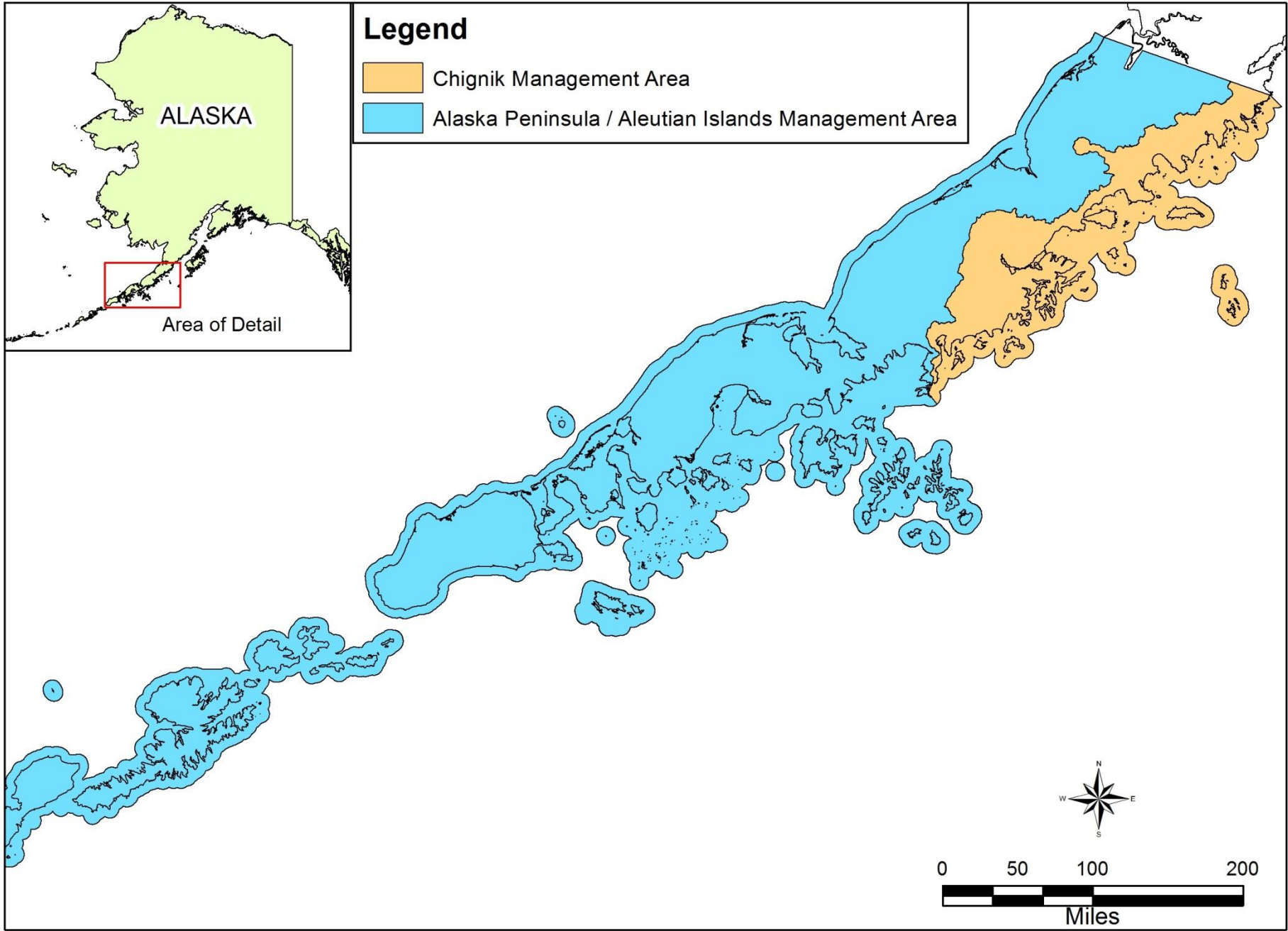
Review Approach and Process

- Three-year interval
- Review stock data quality and availability
- Determine appropriate goal type and methods
- Perform analysis, assess goal range, team review
- Develop draft findings for directors of Commercial Fisheries and Sport Fish Divisions
- Post-meeting memo signed by both directors



Legend

-  Chignik Management Area
-  Alaska Peninsula / Aleutian Islands Management Area



Alaska Peninsula – Aleutian Islands Management Area

Summary: Decisions by Goal

Decisions: No Change

- Sockeye Salmon

Stock	Goal Type	Range
Cinder River	SEG	36,000 to 94,000
Meshik River	SEG	48,000 to 86,000
Bear Lake Early-run	SEG	176,000 to 293,000
Bear Lake Late-run	SEG	117,000 to 195,000
Nelson River	SEG	97,000 to 219,000
North Creek	SEG	7,500 to 10,000
McLees Lake	LB SEG	>10,000

Alaska Peninsula – Aleutian Islands Management Area

Summary: Decisions by Goal

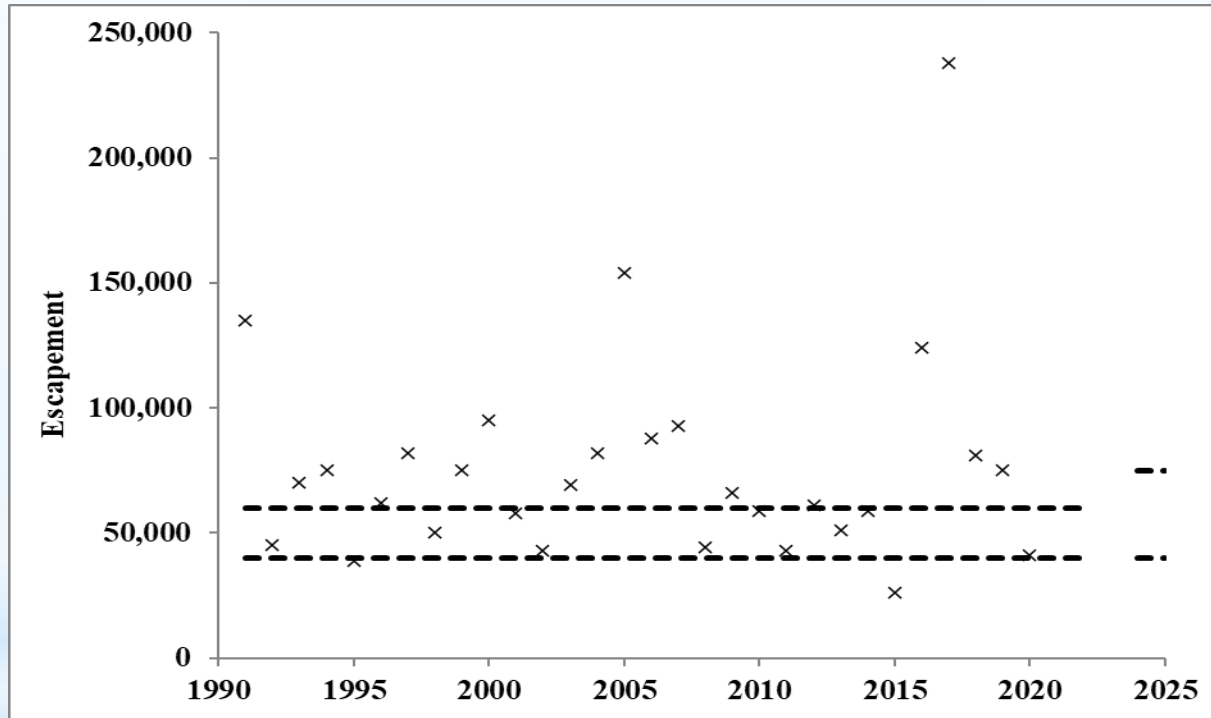
Decisions: No Change

Species/Stock	Goal Type	Range
King Salmon		
Nelson River	BEG	2,400 to 5,000
Pink Salmon		
South Peninsula Annual Aggregate	SEG	1,750,000 to 4,000,000
Chum Salmon		
Southeastern District	SEG	62,500 to 151,900
South Central District	SEG	68,900 to 99,200
Southwestern District	SEG	86,900 to 159,500

Alaska Peninsula – Aleutian Islands Management Area

Summary: Methods and Findings by Goal

- Sockeye Salmon
 - Ilnik River– current SEG 40,000 to 60,000

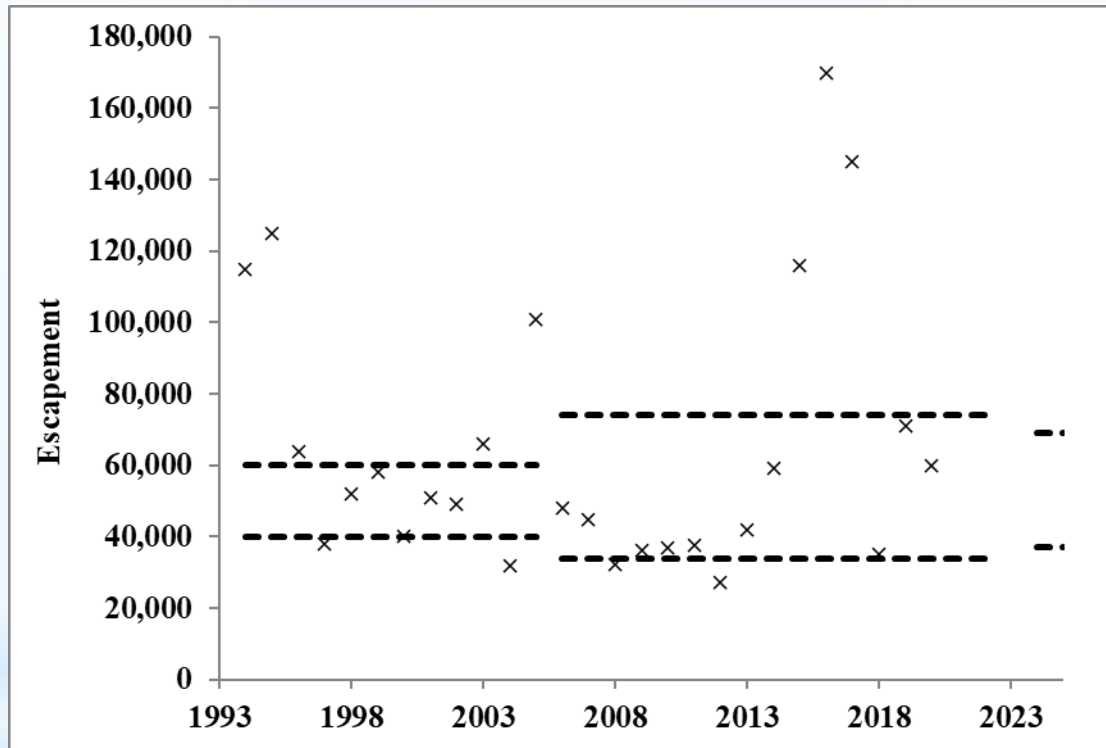


- Finding – Revision to SEG: 40,000 to 75,000
 - Recent escapement data was assessed with the Percentile Approach (15th to 65th percentiles)
 - Moderate harvest rate
 - Contrast = 9.2

Alaska Peninsula – Aleutian Islands Management Area

Summary: Methods and Findings by Goal

- Sandy River– current SEG 34,000 to 74,000

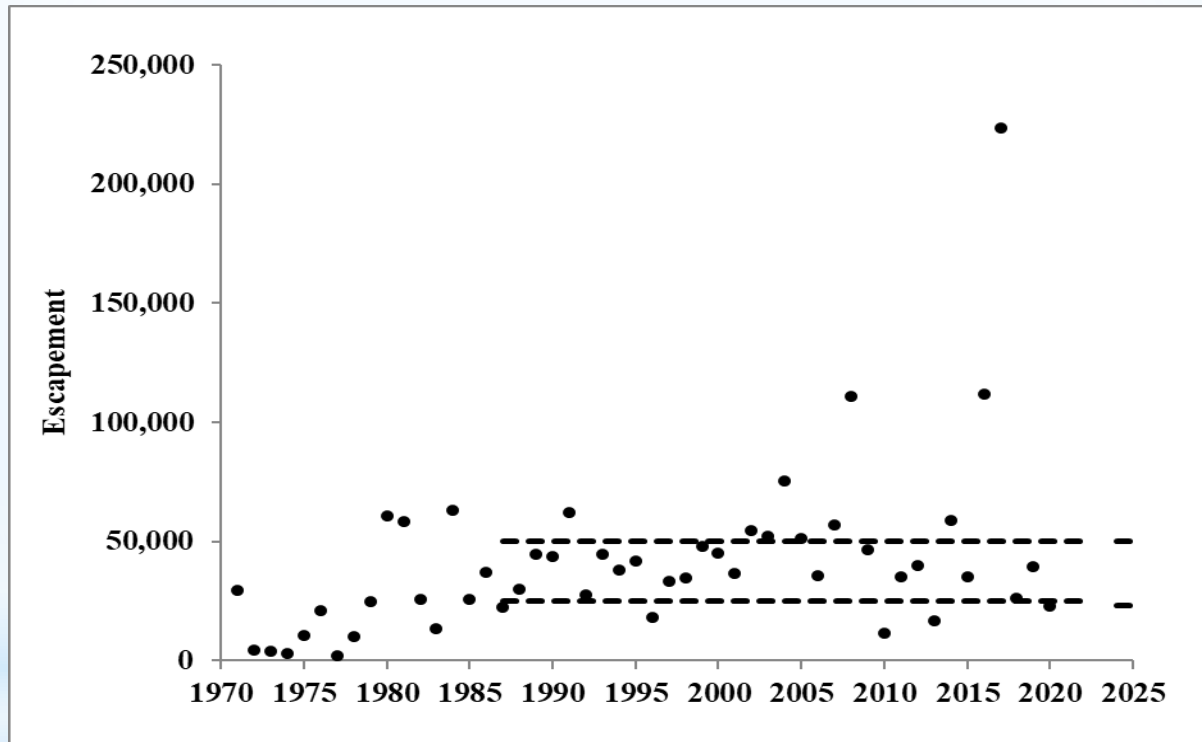


- Finding – SEG: 37,000 to 69,000
 - Recent escapement data was assessed with the Percentile Approach (25th to 75th percentiles)
 - High Harvest Rate
 - Contrast = 6.3

Alaska Peninsula – Aleutian Islands Management Area

Summary: Methods and Findings by Goal

- Christianson Lagoon– current SEG 25,000 to 50,000

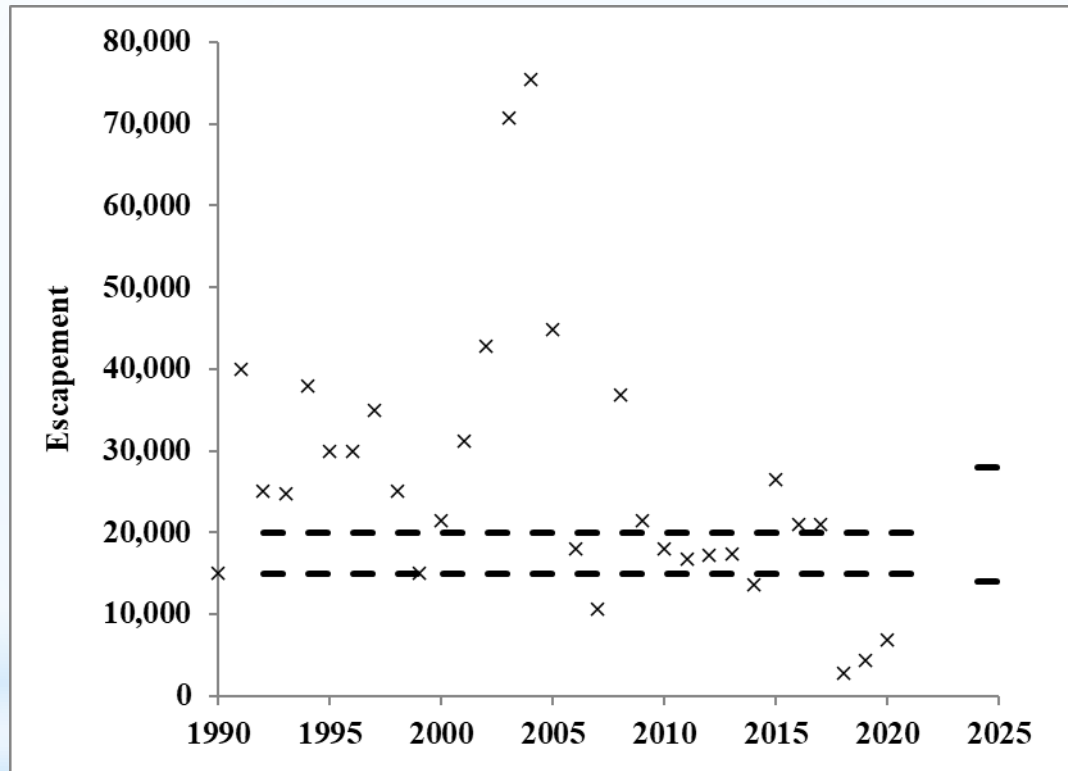


- Finding – SEG: 23,000 to 50,000
 - Recent escapement data was assessed with the Percentile Approach (25th to 75th percentiles)
 - High Harvest Rate
 - Contrast = 101.6

Alaska Peninsula – Aleutian Islands Management Area

Summary: Methods and Findings by Goal

- Orzinski Lake – current SEG 15,000 to 20,000

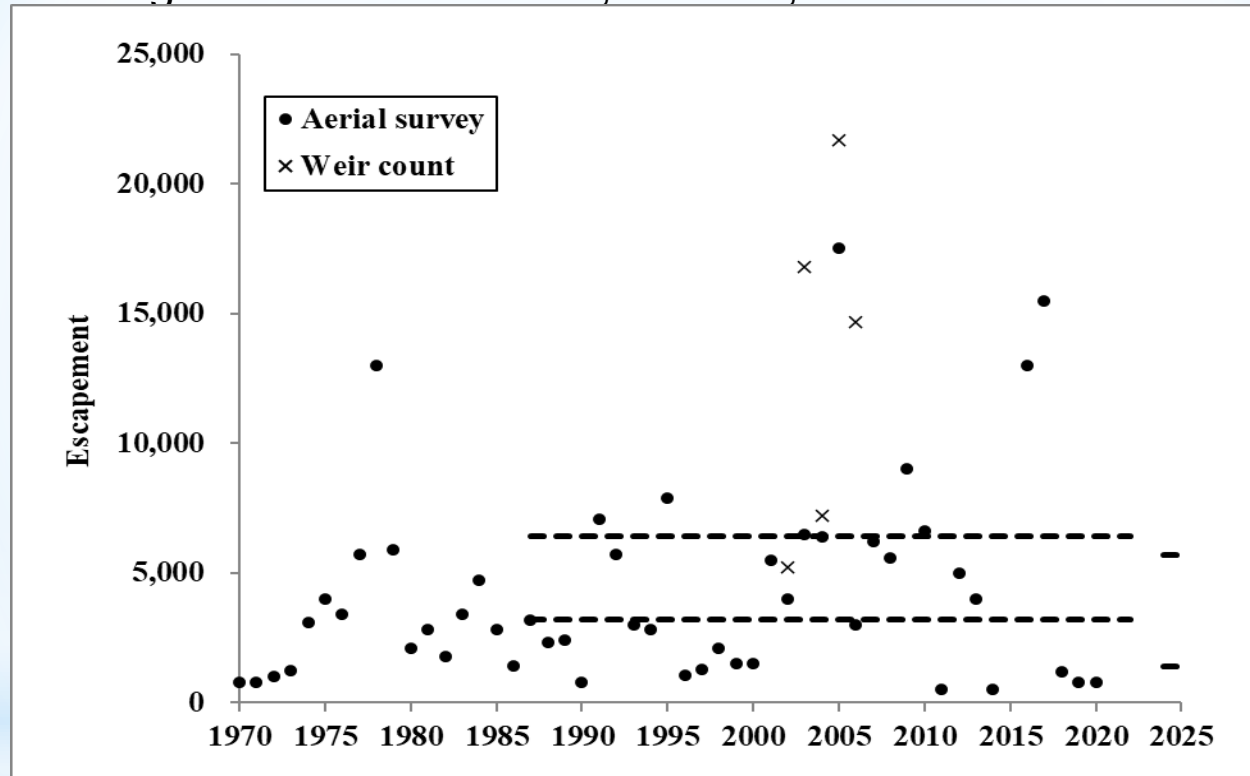


- Finding –SEG: 14,000 to 28,000
 - Recent escapement data was assessed with the Percentile Approach (15th to 65th percentiles)
 - Moderate Harvest Rate
 - Contrast = 26.8

Alaska Peninsula – Aleutian Islands Management Area

Summary: Methods and Findings by Goal

- Mortensen Lagoon– current SEG 3,200 to 6,400

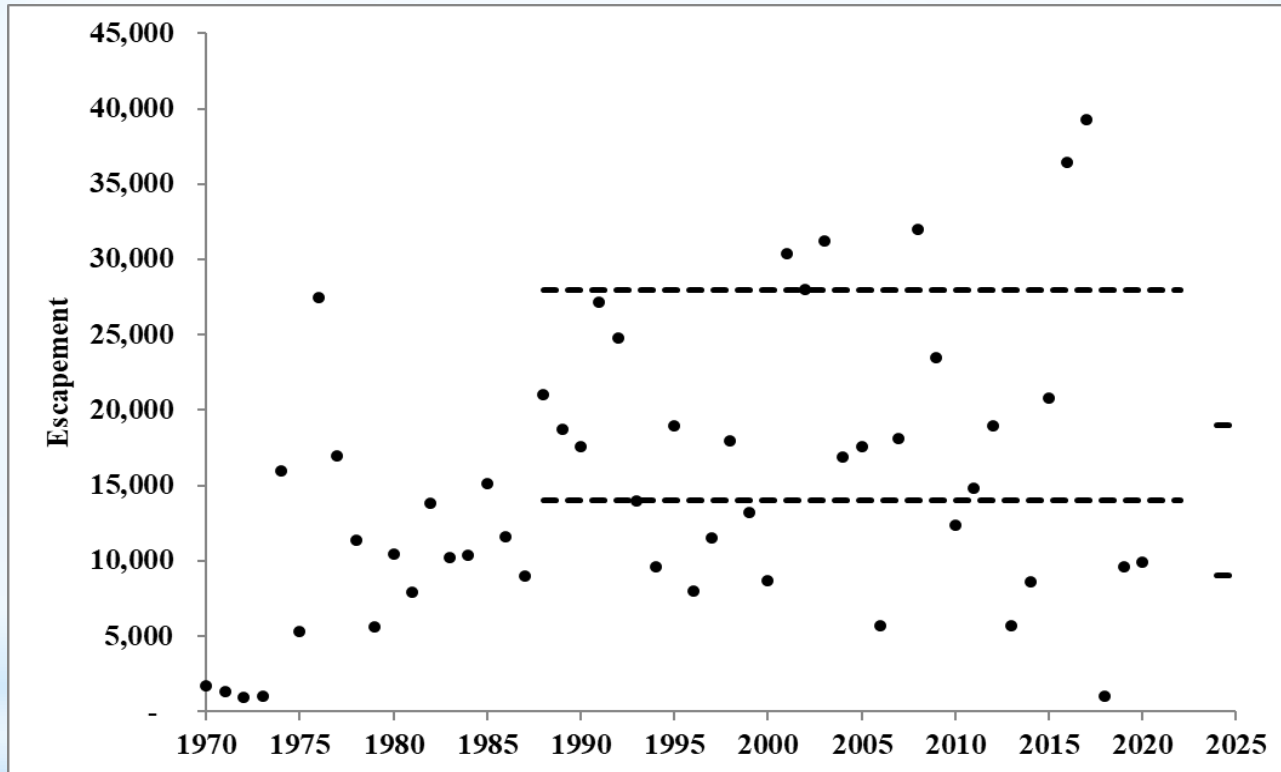


- Finding –SEG: 1,400 to 5,700
 - Recent escapement data was assessed with the Percentile Approach (25th to 75th percentiles)
 - High Harvest Rate
 - Contrast = 35

Alaska Peninsula – Aleutian Islands Management Area

Summary: Methods and Findings by Goal

- Thin Point Lake– current SEG 14,000 to 28,000

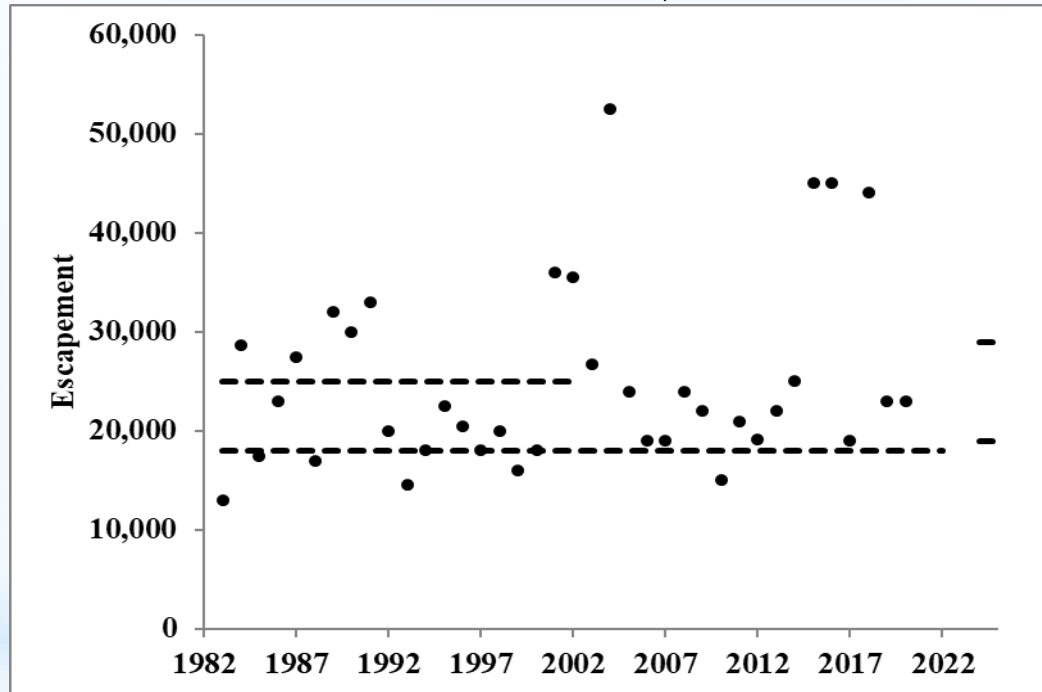


- Finding – SEG: 9,000 to 19,000
 - Recent escapement data was assessed with the Percentile Approach (25th to 75th percentiles)
 - High Harvest Rate
 - Contrast = 40.1

Alaska Peninsula – Aleutian Islands Management Area

Summary: Methods and Findings by Goal

- Coho salmon
 - Nelson River – current LB SEG 18,000

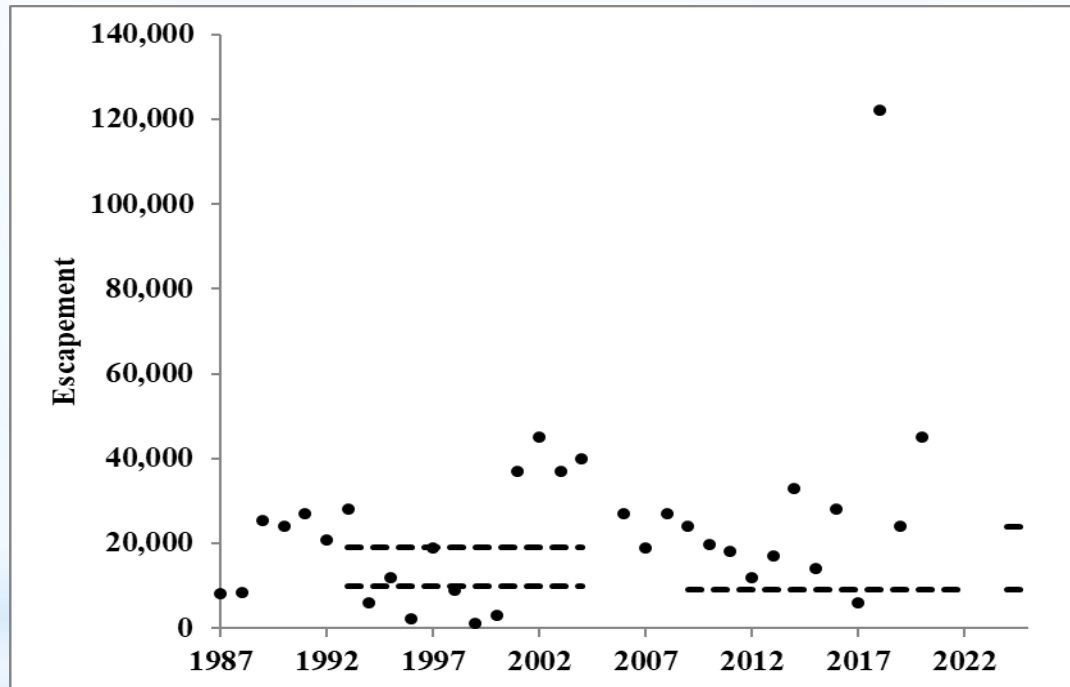


- Finding – Revision to SEG: 19,000 to 29,000
 - Recent escapement data was assessed with the Percentile Approach (25th to 75th percentiles)
 - Moderate harvest rate
 - Contrast = 3.6

Alaska Peninsula – Aleutian Islands Management Area

Summary: Methods and Findings by Goal

- Coho salmon
 - Ilnik River – current LB SEG: >9,000



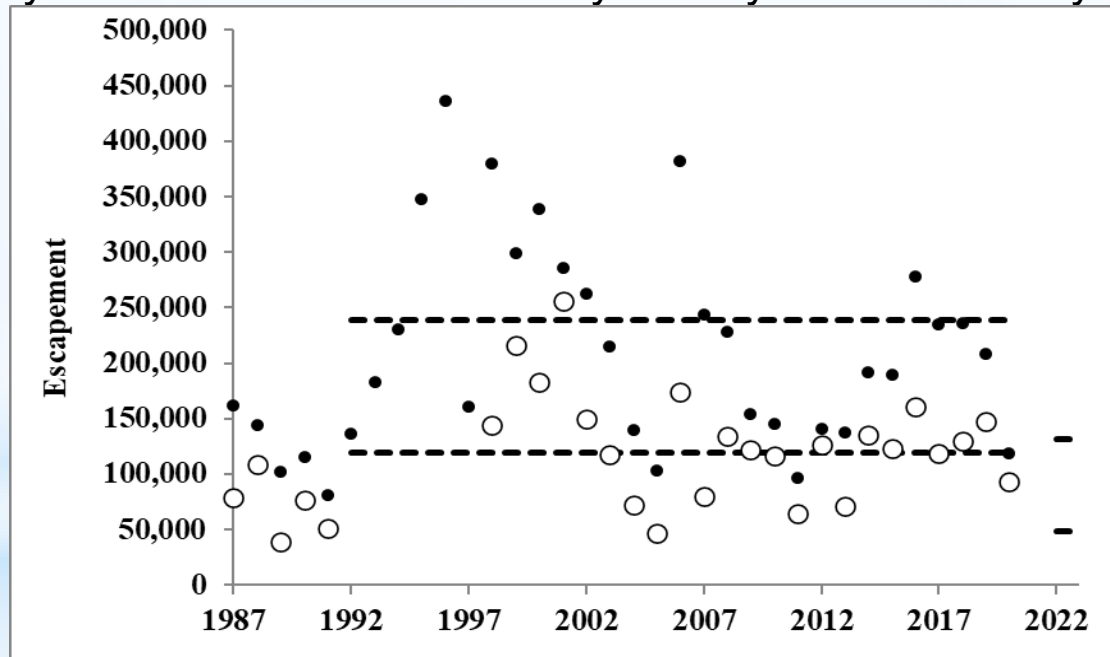
- Finding – Revision to SEG: 9,000 to 24,000
 - Recent escapement data was assessed with the Percentile Approach (20th to 60th percentiles)
 - Moderate harvest rate
 - Contrast = 122

Alaska Peninsula – Aleutian Islands Management Area

Summary: Methods and Findings by Goal

Methods

- Chum Salmon
 - Consistency of data
 - Single Peak aerial survey from within the river with good or fair survey conditions
 - Only systems that are consistently surveyed successfully (>29 of 31 years)



Northern District Chum Salmon: Observed escapement by year using the All PAS Index (solid circles) and revised District Index (open circles), and historical escapement goals (dashed line).



Alaska Peninsula – Aleutian Islands Management Area

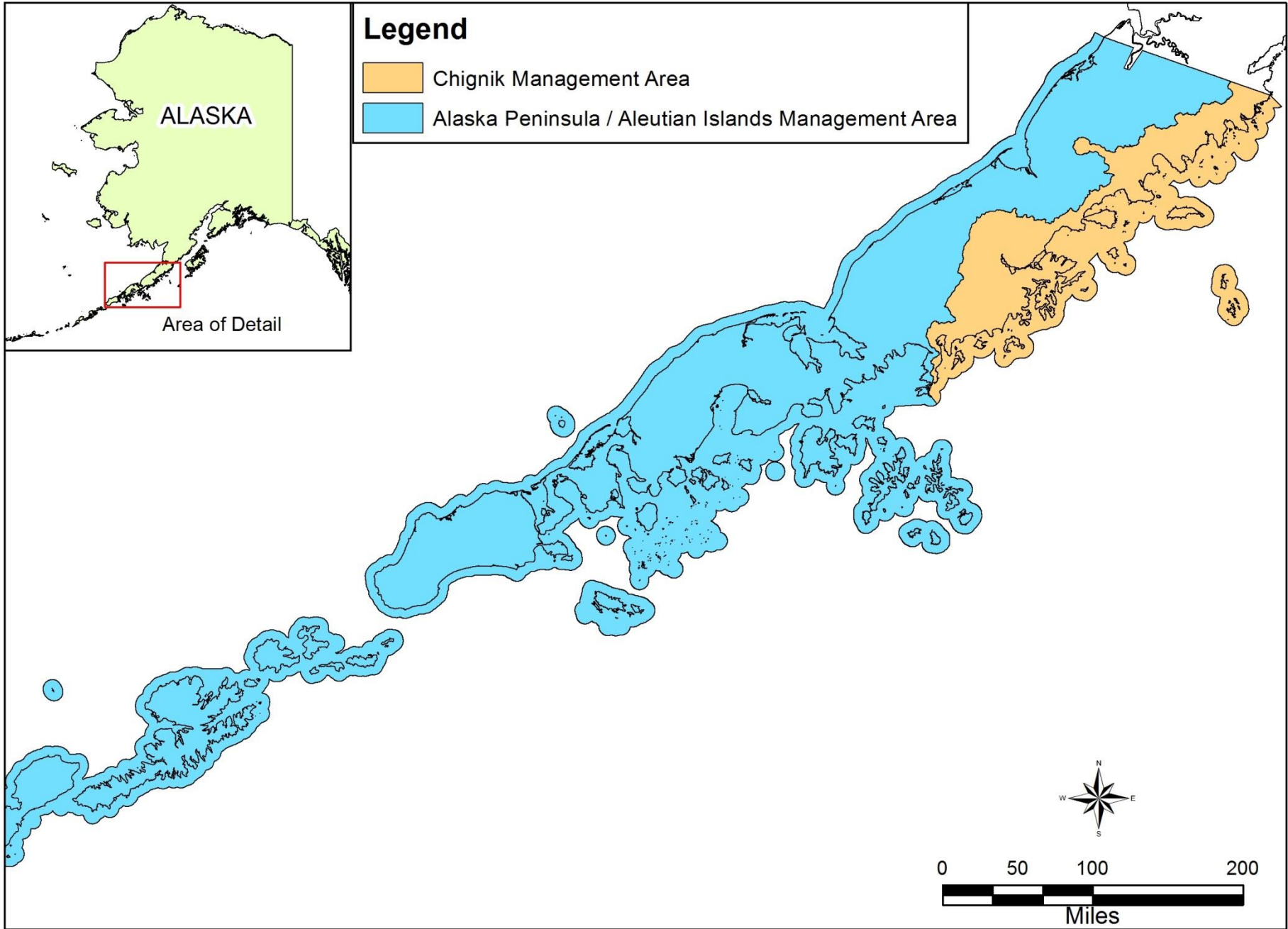
Summary: Methods and Findings by Goal

- Chum Salmon
 - Northern District – current SEG 119,600 to 239,200
 - Finding – Revision to SEG 49,000 to 132,000
 - 18 Index streams
 - Northwestern District – current SEG 100,000 to 215,000
 - Finding – Revision to SEG 49,000 to 133,000
 - 9 Index streams



Legend

-  Chignik Management Area
-  Alaska Peninsula / Aleutian Islands Management Area



Chignik Management Area

Summary: Methods and Findings by Goal

Findings: No Change

- King Salmon
 - Chignik River BEG: 1,300 to 2,700
- Pink Salmon
 - Even-year aggregate SEG: 170,000 to 280,000
 - Odd-year aggregate SEG: 260,000 to 450,000
- Chum Salmon
 - Aggregate SEG: 45,000 to 110,000
- Coho Salmon
 - No goals in CMA

Chignik Management Area
Summary: Methods and Findings by Goal

Finding: Revise Goals

- Chignik River sockeye salmon

Questions?

